



NAMCRANE
Certified Crane Specialists

NAMCRANE **COMPANY PROFILE**

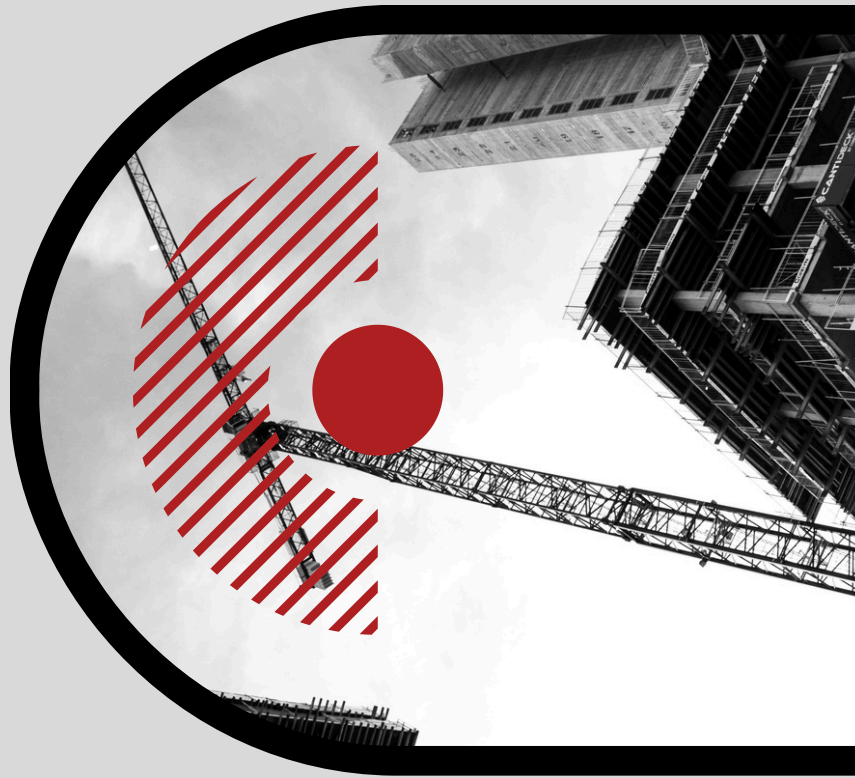
info@namibia.co.na

2
0
2
5



TABLE OF CONTENTS

About Company	01
Vision & Mission	02
Our Services	03
Our Projects	05
Gallery	06
Certificates	09
Contact us	14



ABOUT US

Founded in 2002, Namcrane Engineering CC has proudly served Namibia for over 20 years, earning a reputation as a trusted leader in the mining, marine, offshore, and industrial sectors. Our extensive experience and unwavering commitment to excellence have positioned us as a preferred partner for lifting equipment solutions across the country.

As a proudly Namibian-registered company, we are deeply committed to empowering local talent by exclusively employing Namibians, fostering growth, and contributing to the local economy. At Namcrane, we take pride in being a certified Approved Inspection Authority, specializing in the inspection, load testing, and certification of marine, offshore, mobile, overhead, forklift, and truck-mounted cranes.

Our mission is simple yet impactful: to help businesses ensure their equipment complies with all regulatory and safety standards, offering them peace of mind and the ability to focus on what they do best. We prioritize safety, reliability, and efficiency in every service we provide, ensuring that our customers' operations run smoothly and without compromise.

With two decades of expertise and a steadfast commitment to quality, Namcrane continues to lead the way in lifting solutions, delivering tailored services designed to meet the unique needs of our clients. Whether it's certified load testing, maintenance, repair, or equipment supply, we stand ready to provide dependable, industry-compliant solutions.





VISION & MISSION

Vision

At NamCrane Engineering CC, our mission is to provide safe, reliable, and certified lifting solutions that meet the highest industry standards. We are committed to helping businesses ensure regulatory compliance, operational efficiency, and equipment longevity through expert inspection, load testing, maintenance, and repairs. By prioritizing safety, quality, and customer satisfaction, we empower our clients to focus on their core operations with complete peace of mind.

Mission

Our vision is to be Namibia's leading provider of lifting solutions, recognized for excellence, innovation, and integrity. We strive to set the benchmark in the industry by continuously improving our services, investing in local talent, and expanding our expertise to meet the evolving needs of the mining, marine, offshore, and industrial sectors. Through strong partnerships and a commitment to safety, we aim to contribute to a more efficient and secure lifting industry in Namibia and beyond.





OUR SERVICES

We provide comprehensive compliance services for lifting machines and lifting tackle, both on-site and in workshops, in line with the following:

- Routine Inspections of Lifting Machines: Conducted every six months.
- Routine Inspections of Lifting Tackle: Conducted every three months.
- Pre-Inspections of Lifting Machines: Before annual performance tests.
- Annual Performance and Load Testing: Ensuring full compliance.
- Quality and Safety Standards: Adherence to all relevant regulations.
- Record Maintenance: Keeping registers updated with all previous performance tests, modifications, or repairs.

Additionally, we perform repair and maintenance work on lifting machines for mines and offshore vessels, supplying spare parts as needed. As distribution agents for MME Air Winches, Effer Marine Cranes, LSI Load Systems, and more, we ensure reliable access to high-quality equipment and components.



Heavy Lifting Solutions

At Namcrane, we specialize in providing heavy lifting solutions tailored to meet your specific needs. Our expertise in heavy lifting enables us to handle complex and challenging lifting operations with precision and safety.



Marine Crane Services

With our marine crane services, we offer comprehensive solutions for marine-related lifting and handling requirements. From installation to maintenance, our team ensures efficient and reliable crane operations in marine environments.



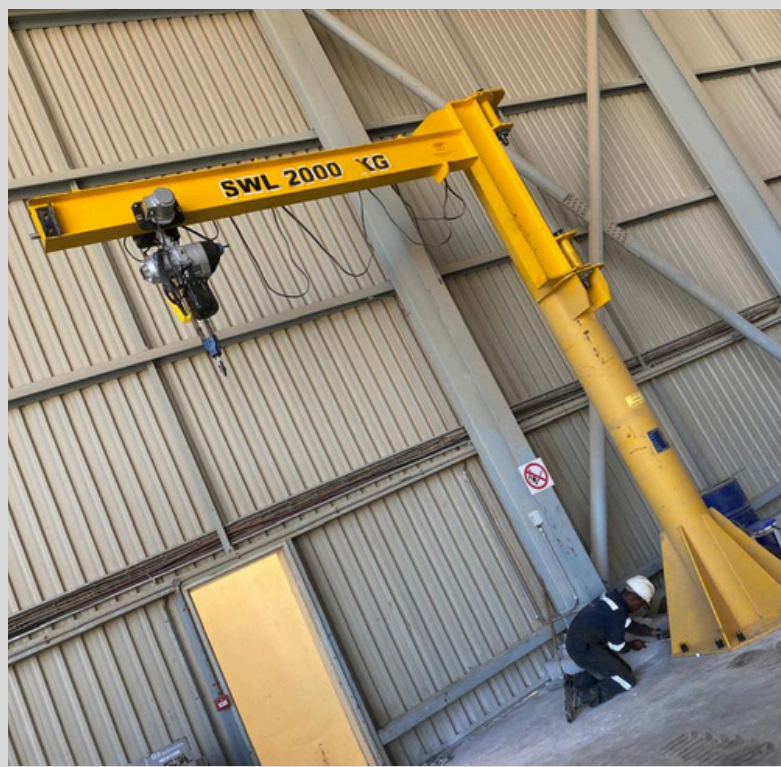
Certified Load Testing

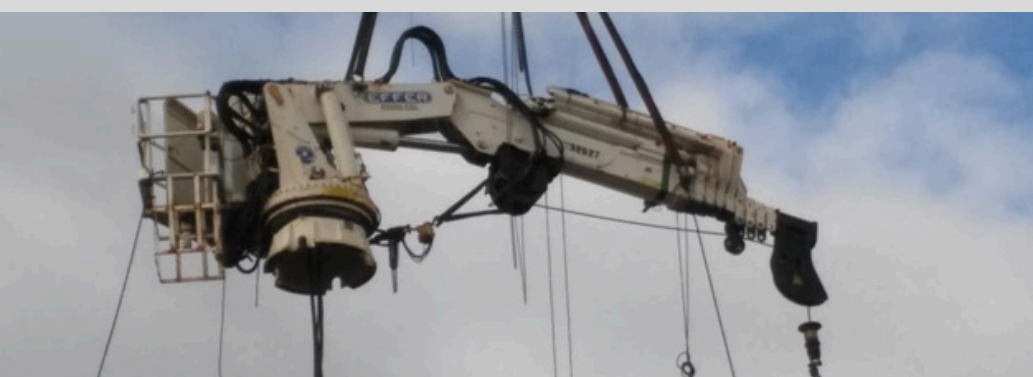
We conduct certified load testing to ensure the safety and reliability of lifting equipment. Our meticulous testing procedures adhere to industry standards, providing you with the assurance of equipment performance and compliance.



OUR PROJECTS

- 20 Ton Condra D.G.E.O.T. Crane for Elgin Brown & Hammer – 2006
- 2 x Effer 65000 5SL, 1 x Effer 125000 4SL Marine Cranes for Debmar Atlantic – 2007
- 1 x Effer 125000 4SL Marine Crane for Debmar Gariep - 2008
- 10 Ton Condra S.G.E.O.T. Crane for Exxaro – 2008
- 5 Ton Condra S.G.E.O.T Crane for Skorpion – 2010
- 2 x 8 Ton Condra S.G.E.O.T Crane for Skorpion – 2010
- 12 x LSI Systems for Marine Cranes on DBMN Fleet – 2010
- 2 x Effer 65000 5SL Marine Cranes for Debmar Gariep – 2011
- 2 x 10T Condra D.G.E.O.T. Cranes for NEC Okahandja – 2013
- 1 x Effer 65000 5 SL Marine Crane for Debmar Pacific – 2014
- 5 Year Survey & Boom Repairs on 45T Favello Favco Offshore Crane for Go Offshore – 2014
- 10 Ton Condra D.G.E.O.T. Crane for Skorpion – 2015
- Sub-Contractor for Condra SA at Husab Mine, Installation, commissioning & Load test of 11 Overhead Cranes – 2015-2017
- 1 x Effer 65000 5 SL Marine Crane for Debmar Atlantic – 2018
- De Beers Marine Namibia – Onboard Crane Maintenance Contract for 6 Vessels – 2017-2021
- 2 x 10 Ton S.G.E.O.T Overhead Cranes for PCS Services for Namagra – 2021
- 1 x 30 Ton GOLATH Overhead Crane for PCS Services for Namagra – 2021
- 1x 32 Ton Overhead Crane for GMS – 2022
- 1 x 32 Ton Overhead Crane for Beifang – 2023









REPUBLIC OF NAMIBIA

MINISTRY OF LABOUR, INDUSTRIAL RELATIONS AND EMPLOYMENT CREATION

Tel.: (061) 206 6324
Fax: (061) 252 462

Private Bag 19005
32 Mercedes Street

Mr. D.M. Shinime david.shinime@mol.gov.na
01/25 25/04

Certificate of Registration as an Approved Inspection Authority

*In terms of Regulation 18 of the Regulations relating to Health and Safety of Employees at work made under
Schedule 1(2) of the Labour Act, 2007(Act 11 of 2007)*

Authorization Number: **A.I.A. 25/04**

This is to certify that: **Namcrane Engineering CC**
P.O. Box 2530
Walvis Bay

Has been approved as an Inspection Authority

Approved competencies	Name of the <u>only</u> person who is deemed competent to render the approved services
Cranes and Lifting Equipment	Rian J. Van Wyk (ID No: 6706045005085)
Inspection, Load Testing, Repairs & Servicing of Lifting Gear and Cranes	Ngunondjamo Kozosi (ID No: 97012900857)
Inspection, Load Testing, Repairs & Servicing of Lifting Equipment and Machinery	Immanuel D. Cupido (ID No: 7303115180086) Matheus T. Kashikola (ID No:91011800535)

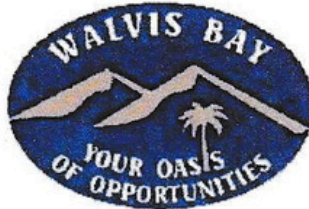
From: 22 January 2025 – 22 January 2026

Chief Inspector:
Mr. J. Shihepo



All official correspondence must be addressed to the Executive Director

Municipality



Walvis Bay

REGISTRATION & FITNESS CERTIFICATE

NO. 2017/0005

NAMCRANE ENGINEERING CC

is registered to carry on business as a

INSPECTIONS, SERVICE & REPAIR

in accordance with the Local Authorities Act 1992 (Act 23 of 1992) and the General Health Regulations 1969 (GN121 of 1969)
Under the following conditions

Name of Owner: JAKES GOOSEN
Name of Manager: JAKES GOOSEN
Business Address: P O BOX 2530, WALVIS BAY, NAMIBIA, 13013
Street Address: 8TH STREET EAST, INDUSTRIAL AREA, WALVIS BAY
Erf No: W4643

Receipt No.:

Date of Registration:

Expiry Date:

MUNICIPALITY OF WALVIS BAY
BUSINESS REGISTRATION OFFICE
J. HAOSSES 12 SEP 2024
REGISTRATION OFFICER
PRIVATE BAG 5017 TEL: 064 2013288

2024/09/11

2025/09/10

Please note: This certificate does not exempt the holder of obtaining a permit or any other document which may be required by law imposed by other ministries. Any alteration of this certificate without the approval of the Registration Authority constitutes a criminal offence.



EEC

Employment Equity Commission

Private Bag 19003, Khomasdal | Tel: +264-61-379150 | Fax: +264-61-258267

Office of The Employment Equity Commissioner

Ref: SA: 07/11/24
Enquiries: ELT Mukotola

Thursday, 07 November 2024

Mr Jake Goosen
Chief Executive Officer
Namcrane Engineering CC
PO Box 2530
Walvis Bay
NAMIBIA

Dear Mr Goosen

RE: AFFIRMATIVE ACTION COMPLIANCE CERTIFICATE

1. The Employment Equity Commission considered and approved your prescribed Affirmative Action Report and takes pleasure in presenting you with the Affirmative Action Compliance Certificate.
2. This Affirmative Action Compliance Certificate is subject to conditions provided for in Section 41 of the Affirmative Action (Employment) Act, Act 29 of 1998.
3. **Your next Affirmative Action Report will be due for submission on or before 07 November 2025.**
4. We commend you for your continued cooperation.

Yours sincerely

O. Podewiltz

Employment Equity Commissioner



All official correspondence must be addressed to the Employment Equity Commissioner

Commissioners: O Podewiltz (Chairperson), R Haufiku (Deputy Chairperson - State), J Hamata (State), D Scott (State), R Gabriel (Women), K Niembu (State), N Pieters (PWD).

REPUBLIC OF NAMIBIA
CLOSE CORPORATIONS ACT, 1988
(Section 13, 14, 27 and 60)
(Regulations 3, 10 and 13)

(To be lodged in triplicate together with the Founding Statement)

Certificate of Incorporation
REGISTRATION NUMBER OF CORPORATION
CC 2002/1610

This is to certify that the Founding Statement (CC I) of

NAMCRANE ENGINEERING CLOSE CORPORATION

has been registered and the above-named Close Corporation was this day incorporated in terms of the Close Corporate Act, 1988.

" The above-named corporation has been converted from a company:

N/A

(Reg. No. CC/2002/1610)

Signed at Windhoek this 17th

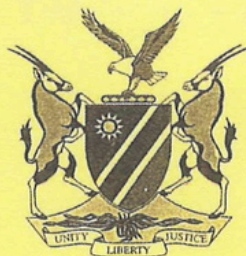
day of July

Two Thousand and 02


REGISTRAR OF CLOSE CORPORATIONS

NAMECRANE ENGINEERING CO	VAT Number 3080170015
P.O. BOX 481	CC/2002/1610
ROSH PINAH	Tel: +264 63 274672
NAMIBIA	Fax: +264 63 274673
	E-mail: info@namcrane.com.za

• (Delete if not applicable)



Republic of Namibia
MINISTRY OF FINANCE
Department of Inland Revenue

Tax Registration Certificate

***** COPY *****

TYPE OF TAX

VALUE ADDED TAX

FILE IDENTIFICATION
NUMBER

3080170-01-5

ALWAYS MENTION THIS FILE IDENTIFICATION NUMBER IN YOUR
CORRESPONDENCE AND AT INTERVIEWS.

TAXPAYER/
REGISTERED NAME

Namcrane Engineering Cc

REGISTRATION/
IDENTITY NUMBER

cc/2002/1610

POSTAL ADDRESS

Box 2921
Walvisbay
Namibia

EFFECTIVE DATE

01/11/2004

DATE OF ISSUE

13/06/2018

ISSUED BY:

Department of Inland Revenue

A handwritten signature in black ink, appearing to be 'J. Shungu', written over a light blue circular stamp.

COMMISSIONER

1. A certified copy of this certificate is to be supplied to your employer where applicable.
2. A certified copy of this certificate may be required by the Directorate of Customs and Excise and is to be supplied on demand by an official.
3. In the event of a copy being submitted, it is the responsibility of the employer to validate such copy against the original.
4. This certificate is not transferable.



CONTACT US

Namcrane Engineering CC



+264 64 203360



info@namibia.com.na



www.namcrane.com



17 Circumferential Rd, Walvis Bay, Namibia

